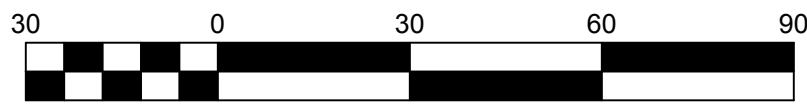
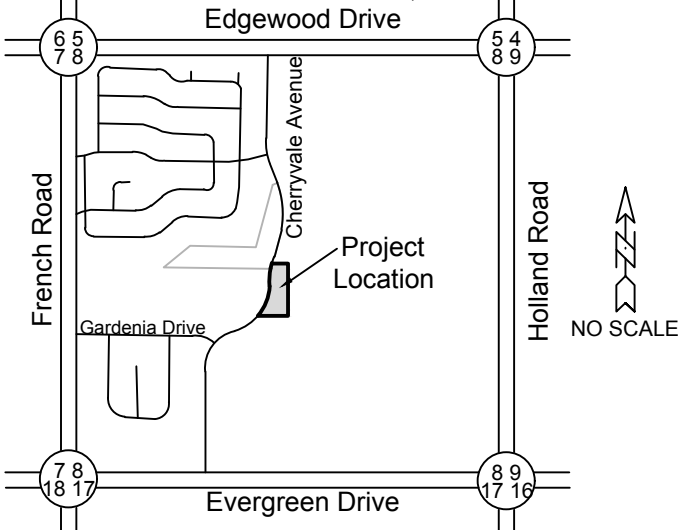


Cherryvale Meadows

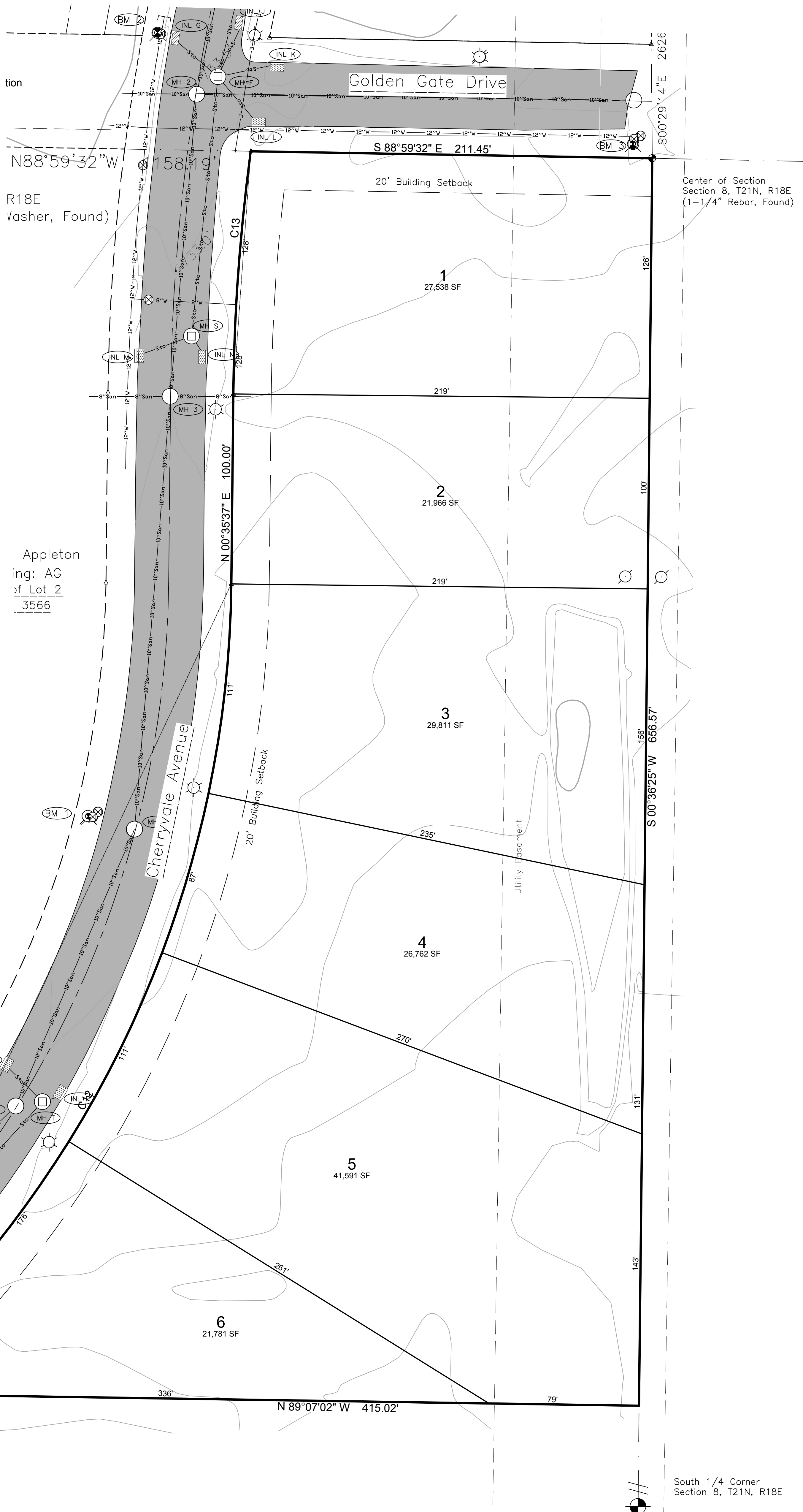
Part of Lot 2 CSM 3566 lying east of Cherryvale Avenue as described in CSM 6782, located in the Northeast 1/4 of the Southwest 1/4 of Section 08, Township 21 North, Range 18 East, City of Appleton, Outagamie County, Wisconsin

LOCATION MAP

W 1/2 SEC 8, T 21 N, R 18 E,
CITY OF APPLETON,
OUTAGAMIE COUNTY, WI



Bearings are referenced to the Outagamie County coordinate system



Appleton
ing: AG
of Lot 2
3566

LEGEND

—CATV—	CATV	○	Sanitary MH / Tank / Base	□	Air Conditioner
—FG—	Underground Fiber Optic	⊗	Clean Out / Curb Stop / Pull Box	⊞	Telephone Pedestal
—OH—	Overhead Electric Lines	⊞	Storm Manhole	⊞	Telephone Manhole
—UW—	Utility Wire	○	Inlet	⊞	CATV Pedestal
—San—	Sanitary Sewer	○	Catch Basin / Yard Drain	○	Sign
—Sto—	Storm Sewer	○	Water MH / Well	○	Soil Boring
—E—	Underground Electric	○	Hydrant	○	Benchmark
—G—	Underground Gas Line	○	Utility Valve	○	1/2" Rebar Found
—T—	Underground Telephone	○	Utility Meter	○	3/4" Rebar Found
—W—	Water Main	○	Utility Pole	○	1" Iron Pipe Found
—800—	Index Contour	○	Light Pole / Signal	○	Government Corner
—700—	Intermediate Contour	○	Guy Wire	○	Recorded As
—	Flood Plain	○	Electric Pedestal	○	
▨	Asphalt Pavement	○	Electric Transformer	○	
▨	Concrete Pavement	+	+799.9	Ex Spot Elevation	
▨	Gravel				

DAVEL ENGINEERING & ENVIRONMENTAL, INC.
CIVIL ENGINEERING CONSULTANTS
1811 Racine Street, Menasha, WI 54952
Ph: 920-991-1866 Fax: 920-830-9595
www.davel.pro